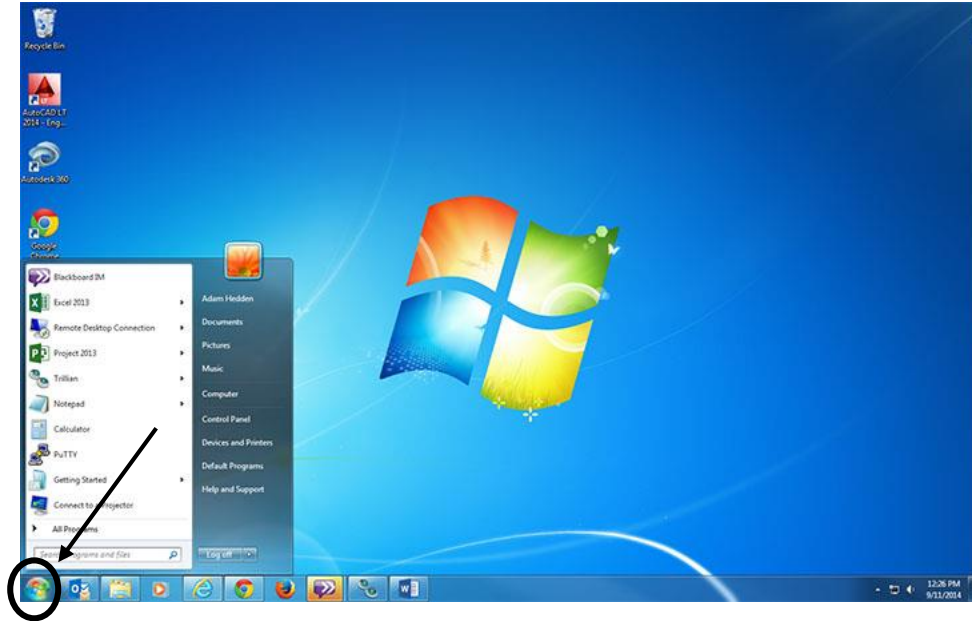
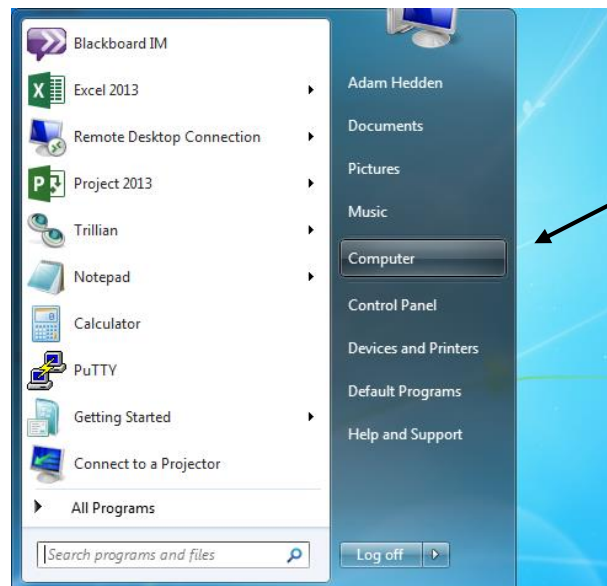


# How-To Run TextHelp from Thumb Drive

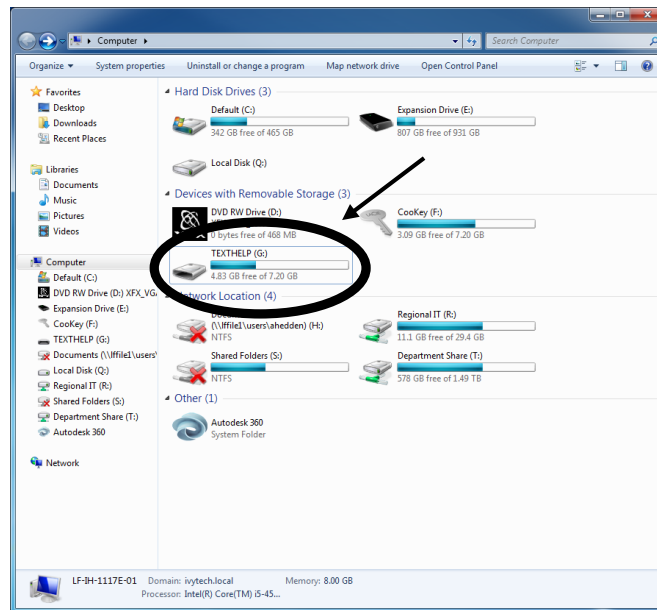
1. Insert the thumb drive in the USB port of your PC or laptop.
2. Click on the START button.



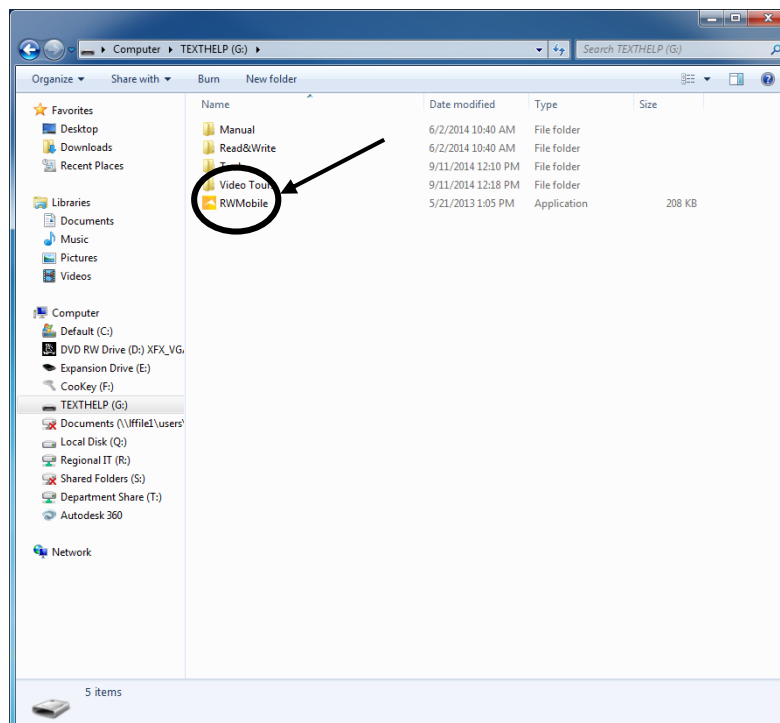
3. Click on COMPUTER



4. Double-click on the flash drive labeled “TEXTHELP”. Please note that the drive letter will be different depending on what laptop / PC you are using.



5. Double-click the file “RWMobile”.



6. You will see the TextHelp Read&Write 11 Gold toolbar.